

# GILLESPIE STREET SITE

## SITE DATA SHEET

1 of 7

### PHYSICAL CHARACTERISTICS

**SIZE:** 40.34 Acres

**LOCATION:** This site is located on this southern edge of the Fayetteville Metro Area. It offers excellent accessibility to many areas of the city, including I-95. It is approximately 1.5 miles from downtown Fayetteville, in Cumberland County. Site is within the Fayetteville City Limits.

**TOPOGRAPHY:** Site slopes from its northwest corner to its southeast corner, with an elevation change of approximately 12 to 14 feet a distance of 1,200 feet.

**STORM WATER:** Cumberland County has no storm water quality and management requirements.

**ZONING:** M2 - Heavy Industrial

**CURRENT USE:** This land is currently used as forestry and open field.

**PRICE:** \$50,000 per acre. Not subdividable

### UTILITIES

**WATER:** [The Public Works Commission of the City of Fayetteville \(PWC\)](#).  
A 12-inch water line serves this site.

PWC operates 2 water treatment plants, with a combined:

System Capacity - 58.0 MGD

Average Demand - 41.0 MGD

Excess Capacity - 17.0 MGD

**SEWER:** [The Public Works Commission of the City of Fayetteville \(PWC\)](#).  
A 12-inch sewer line serves this site.



# GILLESPIE STREET SITE

## SITE DATA SHEET

3 of 7

**HIGHWAY:** [I-95 BUSINESS / US-30](#)  
Four lane I-95 Bus./US-301 is located 0.5 mile east of this site.

[GILLESPIE STREET](#)  
Five lane Gillespie street provides immediate access to this site, as well as access to downtown Fayetteville.

**AIRPORT:** [Fayetteville Regional Airport](#)  
2.5 miles south via Gillespie Street and I-95 Business/US-301  
5 minutes driving time  
24 daily flights

[Raleigh-Durham International Airport](#)  
83 miles northwest on I-95 and I-40  
approximately 90 minutes driving time  
500 daily flights to 41 cities

**Update:** Beginning June 2005, US Airways will be adding one daily flight to Charlotte, NC, bringing the total daily flights to 9. In addition they will add two round trip flights from Fayetteville "direct" to Philadelphia, PA.

**SEAPORTS:**      [Wilmington, NC](#)      - 92 Miles                      [Charleston, SC](#)      - 190 Miles  
                         [Morehead City, NC](#)   - 144 Miles                      [Norfolk, VA](#)         - 208 Miles

## CONTACTS

### CUMBERLAND COUNTY BUSINESS COUNCIL

**Phyllis M. Owens, CEcD,  
Executive Vice President**

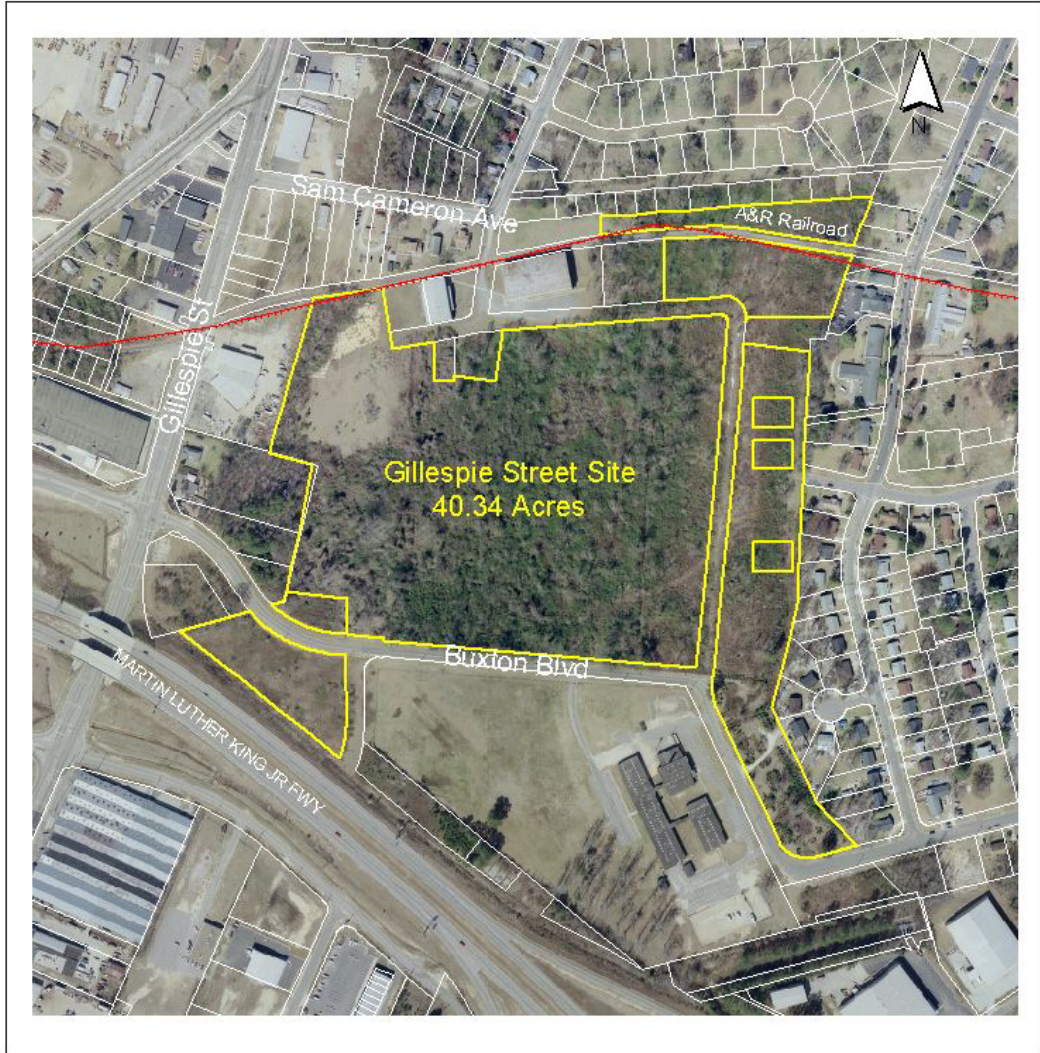
201 Hay Street - 4<sup>th</sup> Floor  
PO Box 9

Fayetteville, NC 28302  
1-800-396-4210

Phone: 910-484-4242 ext. 246      E-main: [powens@ccbussinescouncil.org](mailto:powens@ccbussinescouncil.org)  
Fax: 910-483-4042                      Web site: [ccbussinescouncil.org](http://ccbussinescouncil.org)

### Orthophotography

### Gillespie Street Site



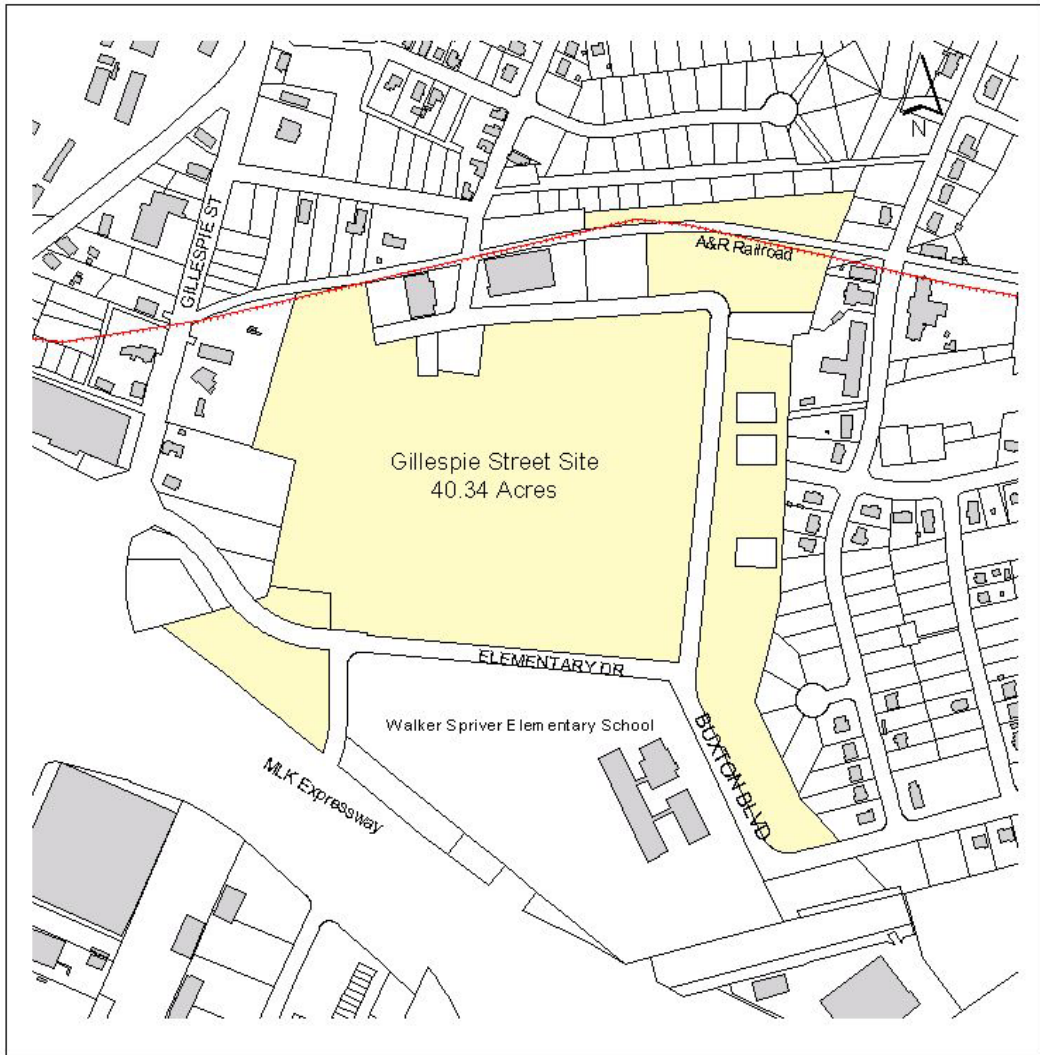
Scale: 1" = 400'



Cumberland County Business Council  
PO Box 9 Fayetteville, NC 28302  
(910)-483-3408 Fax: (910)-483-4042  
WEB: [www.ccbusinesscouncil.org](http://www.ccbusinesscouncil.org)

### Buildings & Structures

### Gillespie Street Site



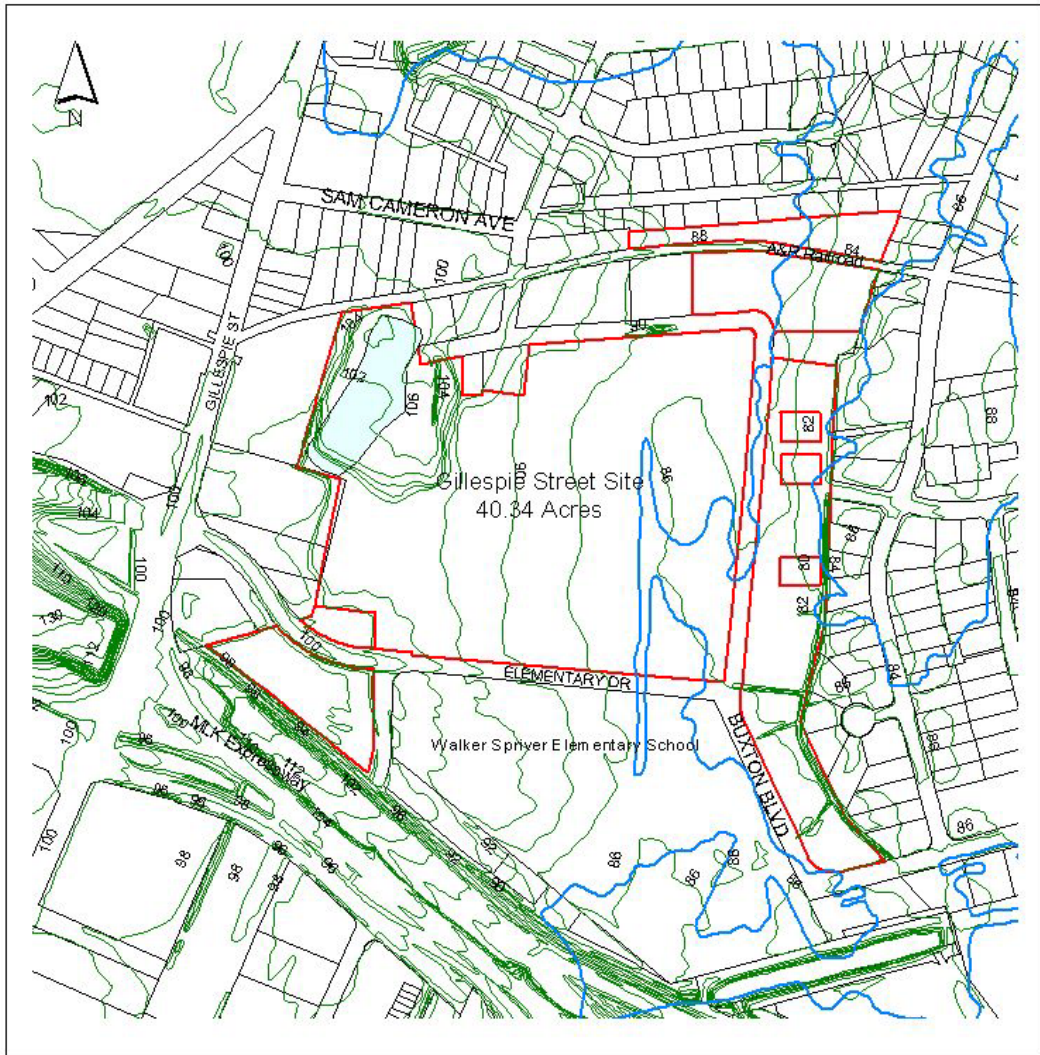
Scale: 1" = 400'



Cumberland County Business Council  
PO Box 9 Fayetteville, NC 28302  
(910)-483-3408 Fax: (910)-483-4042  
WEB: [www.ccbusinesscouncil.org](http://www.ccbusinesscouncil.org)

### Topography

### Gillespie Street Site



Scale: 1" = 400'

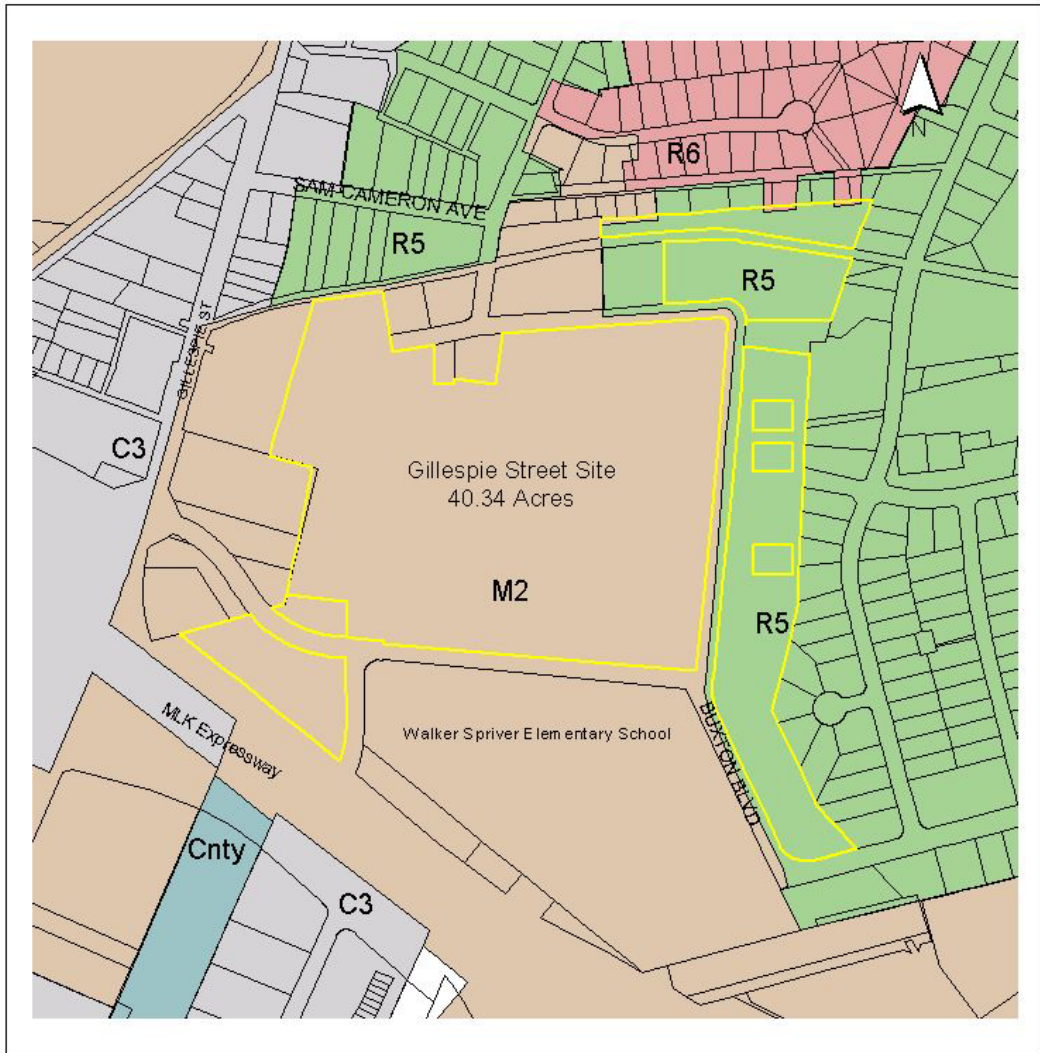
- 100 Year Flood Plain
- Wetlands
- 2' Contours



Cumberland County Business Council  
PO Box 9 Fayetteville, NC 28302  
(910)-483-3408 Fax: (910)-483-4042  
WEB: [www.ccbusinesscouncil.org](http://www.ccbusinesscouncil.org)

### Zoning

### Gillespie Street Site



Scale: 1" = 400'



Cumberland County Business Council  
PO Box 9 Fayetteville, NC 28302  
(910)-483-3408 Fax: (910)-483-4042  
WEB: [www.ccbusinesscouncil.org](http://www.ccbusinesscouncil.org)